

2. Acceptable subfloor types

CDX Underlayment grade plywood (at least 1/2" thick); Underlayment grade particleboard; OSB (at least 3/4" thick); Concrete Slab; Existing wood floor; Ceramic tile; Resilient tile; Sheet vinyl. The subfloor must be stable, and not subject to any movement give/flex.

3. Pre-installation subfloor requirements

3.1 Subfloors

Although ELKOR SPC core vinyl click flooring is waterproof, it is not a moisture barrier. Any moisture problems needs to be corrected prior to installation. New concrete floors need to cure for a minimum of 60 days. British Standards drying time is recommended for new mineral and concrete floors of 1 month for each 1inch (25mm) of depth. Ensure concrete is cured and the subfloor is dry.

Do not install floors where it will be exposed to long term temperatures greater than 35° C. Do not exceed 200m² without transition / expansion profiles & always ensure expansion gaps to all perimeter wall & fixed objects are a minimum of 6/8mm.

3.2 Subfloor Preparation and Installation

The sub-floor surface must be Smooth, Dry, Clean, Solid and Flat. Any adhesive residue must be removed to ensure proper installation. The sub-floor should be flat within a tolerance of 1/8th inch (3mm) over a span of 4ft (1.22metres) (small / localized areas). Any unevenness over this must be sanded or filled with a floor leveler. Voids or humps in the sub-floor will prevent the floor from locking properly.

3.3 Moisture and humidity levels - use a hygrometer.

In mineral/concrete floors an electronic moisture meter reading must not exceed 2.5%; for wooden sub-floors 14%.

Relative humidity levels must not exceed 75%; ascertained by the hygrometer.

3.4 Damp Proof Barrier

When laying over a new concrete or mineral underfloor, install a damp-proof barrier. If used, a 0.2mm polythene damp-proof membrane must overlap by a minimum of 200mm (8") and be taped together to form a damp-proof seal. Be sure to overlap the edges up each wall by a minimum of 25mm (1").

4. Read before installation Fit as a "floating" floor.

4.1 Inspect each individual plank one by one before installation. No claims on surface defects will be accepted after installation.

- Due to the speed of sudden temperature changes, which has the potential to negatively affect this flooring, it is not recommended to install over any electrical radiant heating system. Installation over electrical radiant heating system will not be covered by the manufacture's warranty. Below instructions are for radiant heating system using water.

4.2 Expansion Gap: Because houses and buildings, as well as adjacent hardwood or laminate floors, expand and contract, it is recommend to leave a 6-8mm expansion gap to the walls and other fixed objects. Use spacers of 6-8mm thickness in areas such as window areas and doorways; heating pipes and other fixtures a minimum gap of 8mm should be followed.

4.3 Fit the floor as a "floating" floor in order that it can freely expand and contract. Do not fix the floor to the sub-floor by any means. **Never screw through the floor.**

4.4 T-mould: Areas greater than 200sqm, or 14m length in either direction and between rooms require extra expansion gaps utilising a T-mould or similar transition moulding, ensuring an expansion gap within.

4.5 For in-floor Radiant heat: ELKOR SPC core vinyl click flooring can be installed over warm water radiant heating systems using the floating method.

- Warm water embedded underfloor heating systems are recommended.
- Turn the heating off for 24 hours before, during and 24 hours after installation when installing over warm water
- Flooring temperature must not exceed 26°C and there must be no areas where the temperature spikes above 26°C.
- Warning: Electric heating mats that are not embedded into the subfloor are not recommended for use underneath ELKOR SPC core vinyl click flooring. Using electric heating mats will void the warranty for your floor in case of failure. ELKOR SPC core vinyl click flooring be fitted over embedded warm water radiant floor heating systems and adhere to the guidelines listed above.
- If electric heating mats that are embedded in foil for use with hardwood laminate and SPC/WPC core flooring is being used, please consult the underfloor heating mat manufacturer for their advice, suitability and warranty. These systems must offer/have a smooth, solid, flat sub-floor surface with no give/flex and no temperature spikes above 26°C. Most such systems have some give/flex and wire ridges, and are therefore not suitable, and the warranty will be void.

5. Protection and maintenance of your floor

- 5.1** Furniture should be moved onto the newly installed floor using an appliance hand trolley over hardboard runways, fully protecting the new floor surface, or lifted and carried.
- 5.2** Do not expose the flooring to long term temperature exceeding 35° centigrade. Do not exceed 200m² without transition / exp expansion profiles & always ensure expansion gaps to all perimeter wall & fixed objects are a minimum of 6/8mm.
- 5.3** Oil or petroleum-based products can result in surface staining. Do not track asphalt-driveway sealer or automobile-oil drips onto the floor.
- 5.4** Caster wheeled chairs should have wide, rubber casters, or they should sit in a large floor protector for castors. Protective mats are required under office chairs.
- 5.5** Use non-staining mats. Rubber may discolor the floor.
- 5.6** Frequently moved furniture should be equipped with felt pads to avoid scratching the floor. Heavy furniture and appliances should be equipped with non-staining large surface floor protectors. Furniture with castors or wheels must be easy swiveling, large surface non-staining and suitable for resilient floors, or they should sit in a large floor protector for castors. Do not use ball type castors as they can damage the floor.
- 5.7** Use floor protectors under furniture.
- 5.8** Use walk off mats at entrances to prevent dirt and grit from being tracked on to the floor.
- 5.9** Vinyl flooring, like other types of smooth floors, may become slippery when wet. Mop / towel dry, then allow time to fully dry after cleaning.
- 6.0** Chairs with castors and wheelchairs when used at a desk or similar, should be on a suitable mat to avoid excess wear to the floor.

6. Maintenance

- Sweep or vacuum daily using soft bristle attachments.
- Clean up spills and excessive liquids immediately.
- Damp mop as needed and use cleaners recommended with no-wax or oil.
- Use proper floor protection devices such as felt protectors under furniture.
- Use a mat at entrance ways (please ensure the mat doesn't have rubber backing).
- Do not use abrasive cleaners, bleach or wax to maintain the floor.
- Do not drag or slide heavy objects across the floor.

7. Claims

All claims are exclusively and unconditionally only for production faults of the material. Claims cannot be made for material on which product faults are visible that has already been used, machined and /or processed. Claims never apply to unauthorized use or incorrect application of the material. Offer will be made for new material to replace the faulty products only, and we will not be liable for related costs such as installation costs, transportation and delivery.

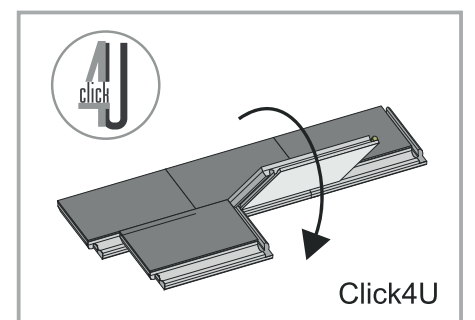
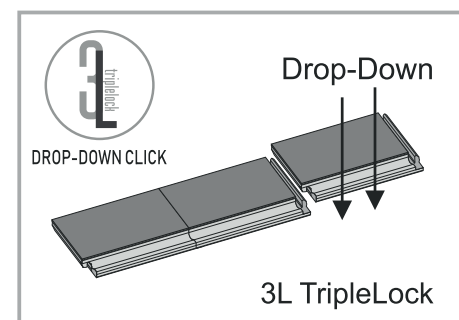
All typesetting and printing errors reserved.

**ALWAYS TAP THE LONG SIDE TO ENSURE IT CLICKS INTO PLACE.
NEVER TAP THE SHORT SIDE (END) AS IT IS A DROP-CLICK.**

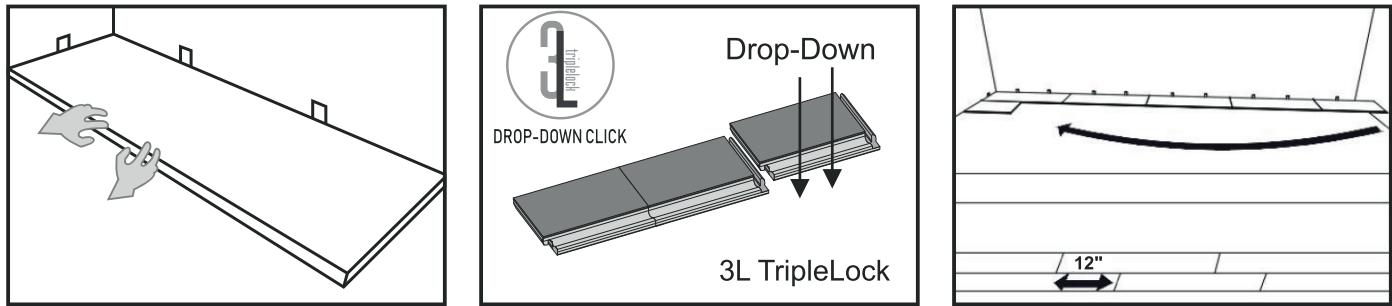
8. Patented Drop-Down click system - Fitted as a “floating” floor.

Patented drop-down Innovations4Flooring click system

The 3L TripleLoc is the first mechanical drop-down system for the short sides - designed to work with the Click4U click system for long sides.



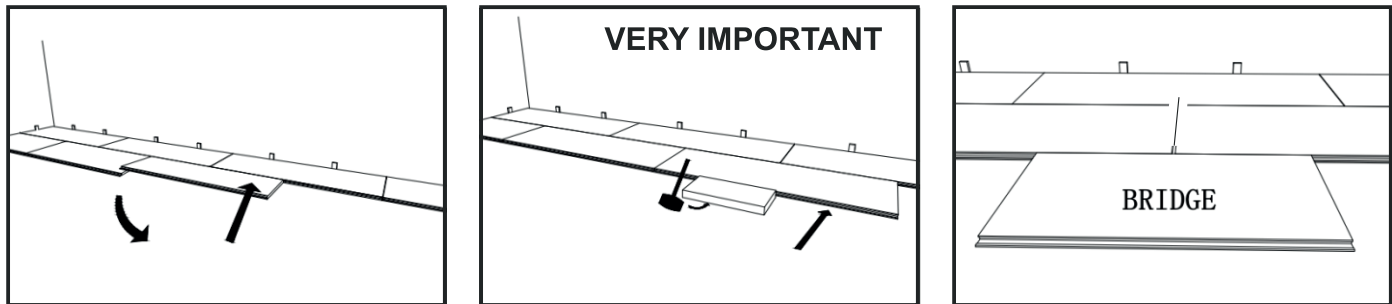
9. Installation steps • START AT THE TOP LEFT WITH TONGUE TO THE WALL
DO NOT SCREW OR GLUE, OR FIX THE FLOOR TO THE SUB-FLOOR AT ANY POINT



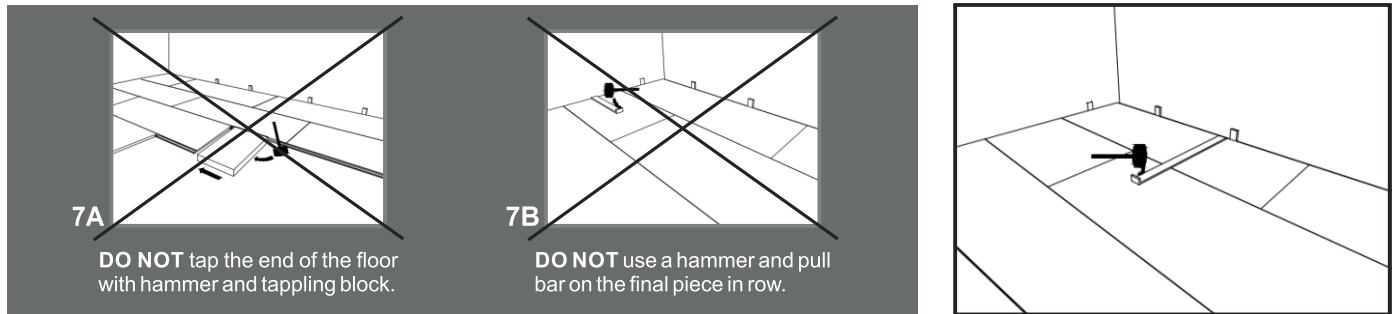
1. After thoroughly cleaning the subfloor, you should begin laying from left to right. Place the floorboard 6mm (1/4") from the left wall. Use spacers between the wall and the floorboard.
2. Lock short end of the floor by inserting the tongue into the groove by dropping it into place. Use rubber mallet to ensure it hooks fully into place. Continue this until end of the \ first row.
3. Use the floor cutting, which is left from the first row as the starter for the second row, ensuring a minimum 300mm overlap.

WARNING: FAILURE TO PROPERLY LINE UP THE END JOINT AND ATTEMPTING TO FORCE IT IN WHILE OUT OF ALIGNMENT COULD RESULT IN PERMANENT DAMAGE TO THE END JOINT.

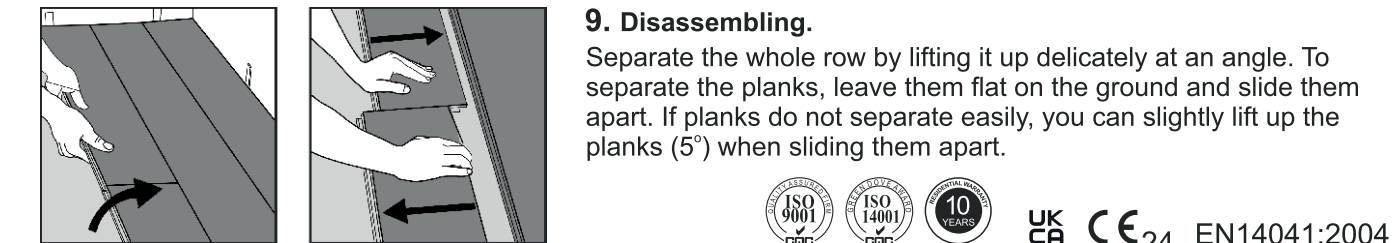
HELPFUL HINT: after finishing the installation of every row, use scrap pieces and a small hammer or rubber mallet to gently tap the planks into the click of the previous row to make sure they are tightly clicked together and make sure there is no gap between the long side of the planks/tiles installed. ANY GAPPING CAN COMPROMISE THE WHOLE INSTALLATION.



4. Lock it by inserting the long edge of the floor into the groove and drop into place. Drop the tongue of the short end of the floor plank / tile into the groove of the adjacent fitted plank / tile and use the rubber mallet to ensure it hooks fully into place.
5. Use hammer and tapping block (trimmed piece of flooring) to tap long edge of the floor to ensure they fit tightly together.
6. Use another piece of the floor to work as a bridge.



AS IT IS A DROP-DOWN END CLICK JOIN, A RUBBER MALLET AND VERTICAL PRESSURE FROM ABOVE ENSURES A TIGHT END-JOINT FIX.



NOTE: PLEASE ENSURE 6-8mm EXPANSION GAPS TO ALL VERTICAL SURFACES AND BETWEEN ROOMS

5.35mm SPC Core Luxury
Rigid Vinyl-Click Flooring
DOP n° 110124. Internal use.

TECHNICAL SUPPORT | TECHNICAL@ELKORPANELS.COM

ELKOR
THE PANELLING SOLUTION

KLICKER
Floors

5.35mm SPC (Stone-Plastic-Composite) Vinyl-Click Flooring
3.80mm SPC Core, Vinyl wear layer 0.55mm. PU Coated Surface.
Pre-attached Virgin High Density IXPE underlay 1.00mm. Total depth 5.35mm.

ELKOR SPC core vinyl click flooring is a luxurious resilient floor based on a very unique formulation which combines the advantage of different materials including natural stone. It is installed as a “floating” floor.
Before installation, please pay attention to important points below:

- Carefully examine the flooring prior to installation for grade, colour, finish and quality. Ensure adequate lighting for proper inspection. If flooring is not acceptable, contact your supplier immediately and arrange for replacement.
- Ensure the sub-floor is dry, and structurally sound. The sub-floor must be clean (thoroughly swept and free of all debris), and the level should be flat to 0.5cm per 30sqm (large area).
- Shuffle the boards for best visual mix of lengths and colour. Check for gapping between pieces and possible cupping, and check the surface.
- Flooring should be one of the last items installed in any new construction or remodel project. All work involving water or moisture should be completed before flooring installation. Installing flooring onto a wet sub-floor could cause cupping, tip & edge raising, telegraphing of core and subsequent gapping.
- Do not install ELKOR SPC core vinyl click flooring where it will be exposed to long term temperature greater than 35°C or have a short term spike of the same temperature, always allow a large expansion gap around heating pipes, windows & doors.
- Do not screw, glue, or fix the floor by any means to the sub-floor.**
- Do not exceed 200m² without transition / expansion profiles & always ensure expansion gaps to all perimeter wall & fixed objects are a minimum of 6/8mm.
- Although this flooring is waterproof, it is not aimed to be used as a moisture barrier. The sub-floor must be dry (max. 2.5% moisture content-CM method). This product is also not to be installed in areas that have a risk of flooding such as saunas or outdoor areas.
- Before the installation, acclimation is required. In this case, keep the planks&tiles in room temperature for at least 48 hours before you start the installation. The room humidity should be 50%~60%. The room temperature must be maintained consistent between 10°C to 25°C before and during installation, and also keep that temperature after installation for at least 48 hours.

CAUTION: Do not install ELKOR SPC core vinyl click flooring over carpet or underlay. This product is not suitable for outdoor use, or rooms that may be exposed to flooding, or showers, wet rooms, saunas, steam rooms, all other wet areas, etc. We also highly recommend you do not install ELKOR SPC core vinyl click flooring in rooms, or homes in which the temperature is not controlled. Exposure to long term direct sunlight and temperatures in excess of 35°C (95°F) can cause expansion damage to your floor. Please ensure larger expansion gaps in these areas. We strive to maintain strict quality control during the manufacturing process but we recommend checking all planks prior to installation.

1. Installation tools

Tape measure	Tapping block (trimmed piece of flooring)	Pencil	Pry bar or pull bar
Chalk line	Spacers	Soft Rubber mallet	

**ALWAYS TAP THE LONG SIDE TO ENSURE IT CLICKS INTO PLACE.
NEVER TAP THE SHORT SIDE (END) AS IT IS A DROP-CLICK.**