

ELKOR

THE PANELLING SOLUTION

INSTALLATION INSTRUCTIONS

Please read this leaflet thoroughly BEFORE installation. CHECK ALL PANELS for batch, shading or any defects prior to installation.

PVC + SOLID KORE, SHOWER + WALL PANELS

Product Options

10mm x 1000mm x 2.4m SHOWERPANEL PACK
1 PVC T+G panel per pack 2.40sqm

10mm x 1000mm x 2.4m SHOWERPANEL PACK
1 SOLID KORE T+G panel per pack 2.40sqm

7mm x 600mm x 2.4m SHOWERPANEL PACK
2 PVC T+G panels per pack 2.88sqm

RECOMMENDED FOR CONTINUOUS PANEL RUNS: Vertical edges tongued and grooved giving finished panelling a smooth, easily maintained surface. When sealed with shower-panel sealant, a waterproof join is assured.

RECOMMENDED FOR SHOWER PANELS: First trim off the tongues on the sides of each panel. Panels are easily cut on-site. The edges being covered by showerpanel extrusions. This will facilitate for faster installation. Panel size: 7mm x 600mm x 2400mm or 10mm x 1000mm x 2400mm.

PANEL PREPARATION

We recommend wearing appropriate personal protective equipment.

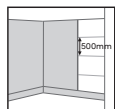
FOR PVC: Using a suitable Upvc handsaw cut the panel with decorative face upwards.

FOR SOLID KORE PANELS: When using a jigsaw or circular saw, cut the panels with the decorative face downwards

PIPES AND ACCESSORIES:

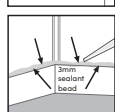
Leave a 3-4mm clearance around all pipes and accessories and seal with a bead of shower-panel sealant. If a collar is to be fitted, first seal with shower-panel sealant.

FIXING PANELLING IN WET AREAS



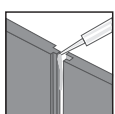
TIMBER BATTENS

45mm x 21 mm battens are recommended to be fitted at a maximum distance of 400mm apart.



PANEL FIXING

Fit panels 3mm above bath, shower tray or floor. Seal expansion gap with shower-panel sealant.



PANEL SEALING IN WET AREAS

Seal all tongue and groove joints with shower-panel sealant. Always seal inside each extrusion profile prior to inserting.

FIXING OF PANELS TO BATTENS

The panels should be fixed direct to battens using shower-panel adhesive. It is recommended that the panels be fixed to battens to provide an air space behind the panels.

Treated timber battens approximately 45mm x 21 mm should be fixed horizontally with one at the head and base of the panels with additional battens at a recommended distance of 400mm apart.

They should be plumb and parallel to each other to give a solid ground for fixing the panels with shower-panel adhesive. Wash-hand basins, towel rails and other heavy items should have additional battens behind them to give a secure fixing.

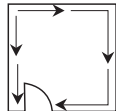
HOLDING PANELS IN PLACE

We recommend screwing the backplate of the panels to the wall, holding the panel firmly in place while the adhesive sets.

For SOLID KORE, use the clips supplied 400mm apart and screw to the wall.

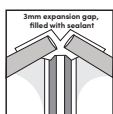
CLEAN EXCESS SEALANT WITH A CLEAN DAMP CLOTH IMMEDIATELY.

TONGUE + GROOVE PANEL INSTALLATION



WHERE TO START

Start at the corner furthest from the door, panel in both directions around the room. The last panel is fitted above the doorway, placed in position. **All panels must be correctly aligned and plumb, allowing for 3mm expansion gaps.** Fix panels to battens using shower-panel adhesive. Seal all panel joins using shower-panel sealant.



BEGIN PANELLING

Fix an internal corner profile in position ensuring that it is plumb. Apply shower panel sealant to the recess of the profile. Apply shower-panel adhesive to the battens. Insert the first panel after cutting to size. Then continue to panel away from the corner in both directions, fixing panels to battens with shower-panel adhesive, and sealing H-joints with shower-panel sealant. **Allow for 3-4mm expansion gaps, filled with shower-panel sealant.**

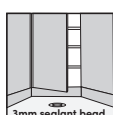
CONTINUE PANELLING

Continue panelling around the room fixing each panel to the battens with shower-panel adhesive. Seal all joins using shower-panel sealant. Use internal and external corner profiles, sealing with shower-panel sealant, where appropriate.

SHOWER PANEL INSTALLATION

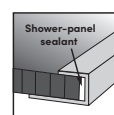
TWO PANEL SHOWER ENCLOSURE

The shower tray must be fitted hard against or cut into the wall. Cut the panels and profiles to size. First fix a showerpanel internal profile in position against the battens ensuring that it is plumb. Apply a generous bead of shower-panel sealant into profile and insert panels. Fix panels to battens using shower-panel adhesive. **Allow for 3-4mm expansion gaps, filled with shower-panel sealant.**



THREE PANEL SHOWER ENCLOSURE

Two internal corner profiles are required. First panel is fitted as for the two panel shower enclosure. Put an internal corner profile onto the edge of second panel. Apply shower-panel adhesive to the battens. Insert other edge into profile already attached to the wall, and swing second panel into place forming back of enclosure. Fix profile to wall, insert third panel and glue to wall. Ensure a generous bead of shower-panel sealant is applied into all profiles. **Allow for 3-4mm expansion gaps, filled with shower-panel sealant.**



FINISHING TOUCHES - END U-TRIM

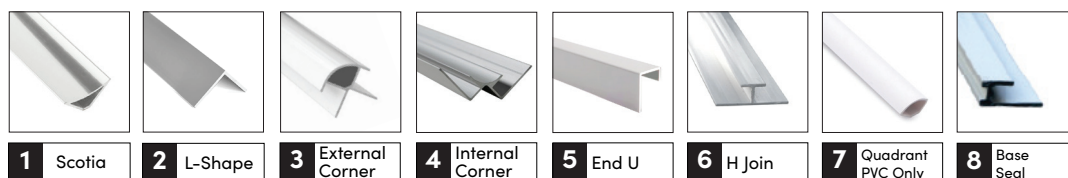
Finish outer panel edges with End U-Trim **applying a generous bead of shower-panel sealant into the End U-Trim.** Seal all gaps around the tray with shower-panel sealant prior to installing the shower door or side panel.

TECHNICAL SUPPORT | TECHNICAL@ELKORPANELS.COM

UNDERSTANDING TRIM OPTIONS



ALUMINIUM + PVC TRIM PROFILES



ALUMINIUM PROFILES

• Bright Silver • White Gloss • Brushed Brass • Matt Black • Satin Silver

PVC PROFILES

• Bright Silver • White Gloss

Due to the limitations of the printing process colours may vary from actual products.

PLEASE PASS PVC + SOLID KORE PANEL MAINTENANCE BROCHURE TO THE END USER

CHECK ALL PANELS FOR BATCH, SHADING OR ANY DEFECTS PRIOR TO INSTALLATION

ELKOR

THE PANELLING SOLUTION

INSTALLATION INSTRUCTIONS

Please read this leaflet thoroughly BEFORE installation.

CEILING, WALL + SHOWER PANELS

DECORATIVE PVC PANELS FOR CEILING, WALL + SHOWERS

Product Options

7mm x 250mm x 2.7m
(4 panels per pack; 2.70sqm)

5mm x 250mm x 2.7m or 4.0m*
(4 panels per pack; 2.70sqm or 4.00sqm)

6mm x 200mm x 2.7m or 4.0m*
(5 panels per pack; 2.70sqm or 4.00sqm)

ASSEMBLY INSTRUCTIONS

Decorative PVC panels can be fixed directly to the wall if the surface is relatively even and if the wall is dry, using shower panel adhesive, or fix on to a frame of wooden battens.

- **When fitting decorative PVC panels to the ceiling**, always fix to a frame of wooden battens.
- **When fixing decorative PVC panels to wooden battens**, the panels can be fixed through the extending backplate fixing tongue using staples with a staple gun, by hammer with panel pins/nails, with screws, or with panel adhesive.
- **When fixing to the ceiling**, adhesive should only be used with additional fixing combined with staples, panel pins/nails, or screws.

• To make a wooden frame, strap the wall with wooden battens placed approximately every 30-40 cm according to the direction of assembly. If panels are assembled vertically, strap in the opposite direction horizontally, and vice-versa. If panels are assembled diagonally, the battens can be installed vertically, horizontally, or at right angles to the panels.

• Start with the preferred end moulding - end "U", internal, external, or scotia. Insert the tongue side of the panel into the moulding.

• Glue the panel, or panel-pin (nail), staple or screw the first panel through the backplate fixing tongue opposite the starting side.

• Insert the tongue of the next panel into the groove and continue the installation of the panels in the same manner.

• Use appropriate PVC or Aluminum mouldings to finish all corners and ends.

• **DECORATIVE H-JOIN MOULDINGS:** If a decorative H-join moulding is used, insert the H-join before fixing the backplate of the first panel and before inserting the second and subsequent panels, then glue the first panel and H-join, or panel-pin (nail), staple or screw through the H-join backplate fixing tongue to fix both the H-join and the first panel. Before inserting an H-join, the panel tongues should first be trimmed off both sides of the panels.

• **SEALING:** Seal the panels with decorative PVC panel silicone sealant between panel joins and mouldings/profiles and all ends if the panels are to be installed in a wet area such as in a shower or around a bath - clean excess sealant with a clean damp cloth immediately.

• **CUTTING:** When cutting with a precision handsaw, cut with the decorative face of the panel upwards.

UNDERSTANDING TRIM OPTIONS

FIXING PANELS

DECORATIVE PVC PANELS CAN BE FIXED WITH:

- STAPLES
- PANEL PINS
- SCREWS
- PANEL ADHESIVE



PVC PANEL MAINTENANCE PLEASE PASS TO THE END USER

Please check pack/batch numbers when buying your decorative panelling. The hardwearing surface of the panelling can be hygienically cleaned with a mild non-abrasive cleaner with an anti-bacterial agent.

ABRASIVE CLEANERS AND BLEACHES MUST NOT BE USED ON ANY ELKOR PANELS.

Do not expose to direct sunlight, or temperatures in excess of 60C. When fitting lighting if in doubt consult the lighting manufacturer.

TECHNICAL SUPPORT | TECHNICAL@ELKORPANELS.COM

SUITABLE FOR COMMERCIAL AND DOMESTIC USE.

Due to the limitations of the printing process colours may vary from actual products.

CHECK ALL PANELS FOR BATCH, SHADING OR ANY DEFECTS PRIOR TO INSTALLATION