



DESIGN AWARD

Flair are proud to have received the **Good Design** Award accolade in recognition of the ETO shower door collection.

The **Good Design** Award is a seal of global design excellence and a testimony to our passion for product quality and innovation.



PATENTED CLICK FIT ASSEMBLY SYSTEM

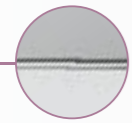
This screw free assembly mechanism revolutionises the way ETO shower doors are fitted, reducing assembly time dramatically for installers.



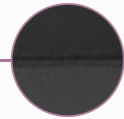
EXPLORE
ETO

ETO

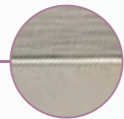
FRAMED 8mm
SHOWER ENCLOSURE
COLLECTION



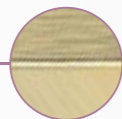
SILVER



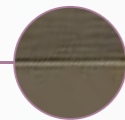
MATTE BLACK



BRUSHED NICKEL



BRUSHED BRASS



BRUSHED BRONZE*

FINISHES

S - Silver
B - Matte Black
BRN - Brushed Nickel
BRB - Brushed Brass
BRZC - Brushed Bronze

* Available Winter 2024.

THE ETO[®] COLLECTION

Experience elegant practicality with ETO.

Crafted to seamlessly integrate into your daily routine, the ETO shower door collection combines robust design with clever functional innovations.

The uniquely shaped handle is beautifully precise and features a cleverly integrated towel hook. Softly curved hinges with a countersunk finish and a slim profile design create a refined shower door aesthetic.

The stylish yet functional simplicity of the ETO collection embodies Design with Purpose, a concept which lies at the heart of this collection.

THE ETO[®] COLLECTION



INFOLD
DOOR

60

HINGE
DOOR

64

HINGE &
INLINE DOOR

68

SLIDING
DOOR

72

ONE DOOR QUADRANT
AND OFFSET QUADRANT

76

TWO DOOR
QUADRANT

82

TWO DOOR
OFFSET
QUADRANT

84

CORNER
ENTRY

86

VISIONARY INNOVATIONS

MAGNETIC INFOLD
LINKAGE SYSTEM



UNIQUELY CRAFTED
ETO HANDLE
WITH INTEGRATED
ROBE HOOK

SOFTLY CURVED
ETO HINGE DESIGN



COUNTER SUNK
INTERIOR HINGES



ULTRA SLIM PROFILE
AND COVER CAP DESIGN

FUNCTIONAL DETAILS

- 

2000mm HEIGHT

2 METRES HIGH
- 

ULTRA CLEAR SEALS

VISUALLY ATTRACTIVE ULTRA CLEAR DOOR SEALS
- 

8mm TOUGHENED SAFETY GLASS

8MM TOUGHENED SAFETY GLASS THICKNESS, CERTIFIED TO EN12150
- 

SEAMLESS INTERIOR COVER STRIPS

SEAMLESS INTERIOR COVER STRIPS CONCEAL ALL FIXATION POINTS INTERNALLY
- 

20mm PROFILE ADJUSTMENT

20MM ADJUSTMENT ON EACH WALL PROFILE
- 

ULTRA SLIM COVER CAPS

ULTRA SLIM COVER CAP DESIGN FOR A SLEEK AND MODERN DOOR AESTHETIC
- 

CRAFTED HANDLE DESIGN

PRECISELY CRAFTED SOLID CHROME PLATED ETO HANDLES THAT FEATURE AN INTEGRATED ROBE HOOK DESIGN
- 

PRESS FIT SEAL DESIGN

INNOVATIVE PRESS FIT SEAL DESIGN FOR EASE OF INSTALLATION
- 

CLEARVUE GLASS COATING

CLEARVUE IS A HYDROPHOBIC GLASS COATING THAT RESISTS THE BUILD UP OF LIMESCALE AND GRIME ON THE GLASS SURFACE
- 

PRE-ASSEMBLED PROFILE FRAME

PRE-ASSEMBLED DOOR FRAME ON INFOLD & HINGE DOOR - FOR EASE OF INSTALLATION
- 

MAGNETIC CUSHION CLOSE DOOR SYSTEM

A MAGNETIZED PISTON DOOR CLOSE MECHANISM GIVES ETO SLIDING DOORS A CONTROLLED AND GENTLE CLOSE ACTION
- 

SUITABLE FOR SIDE PANEL INSTALLATION

SUITABLE FOR INSTALLATION WITH SIDE PANELS
- 

COUNTERSUNK INTERIOR HINGES

COUNTERSUNK INTERIOR HINGES ON ALL HINGE DOORS WITH A FLUSH TO GLASS FINISH FOR EASE OF CLEANING
- 

SHOWER TRAY OR WETROOM APPLICATION

SUITABLE FOR INSTALLATION ON SHOWER TRAY OR WETROOM FLOOR
- 

QUICK RELEASE DOUBLE WHEEL ROLLERS

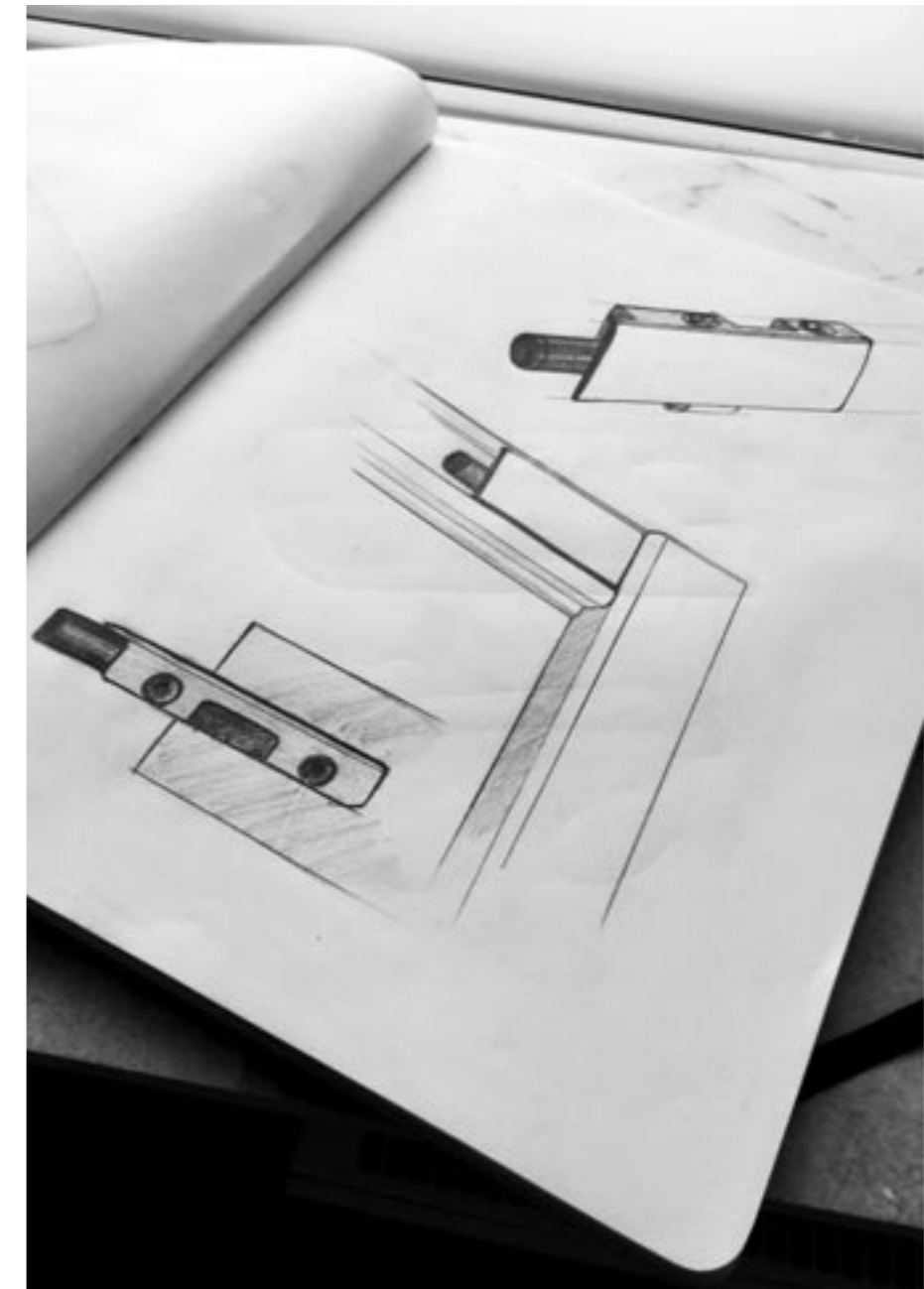
SUPERIOR DOUBLE WHEEL ROLLERS WITH A STAINLESS STEEL WHEEL BEARING AND WHEEL BRACKET COMPOSITION - QUICK RELEASE DESIGN
- 

REVERSIBLE

ALL ETO DOOR STYLES ARE FULLY REVERSIBLE FOR LEFT OR RIGHT HAND INSTALLATION
- 

LIFETIME GUARANTEE

LIFETIME GUARANTEE



DESIGN WITH PURPOSE



MAGNETIC INFOLD LINKAGE SYSTEM

The ETO Infold door features a pioneering magnetic linkage system which ensures the smoothest of motion as the door functions. The solid metal linkage arm is bonded directly to the glass and provides for an ultra minimalist infold door aesthetic. This innovative design removes the need for magnetic seals, giving a beautifully seamless glass edge on the door.

MAGNETIC CUSHION CLOSE DOOR SYSTEM

A concealed piston door close system gives ETO sliding doors a controlled and gentle close action. Double rollers with stainless steel ball bearings and a stainless steel wheel bracket design deliver an effortless sliding experience as the door glides along the magnetised rail.



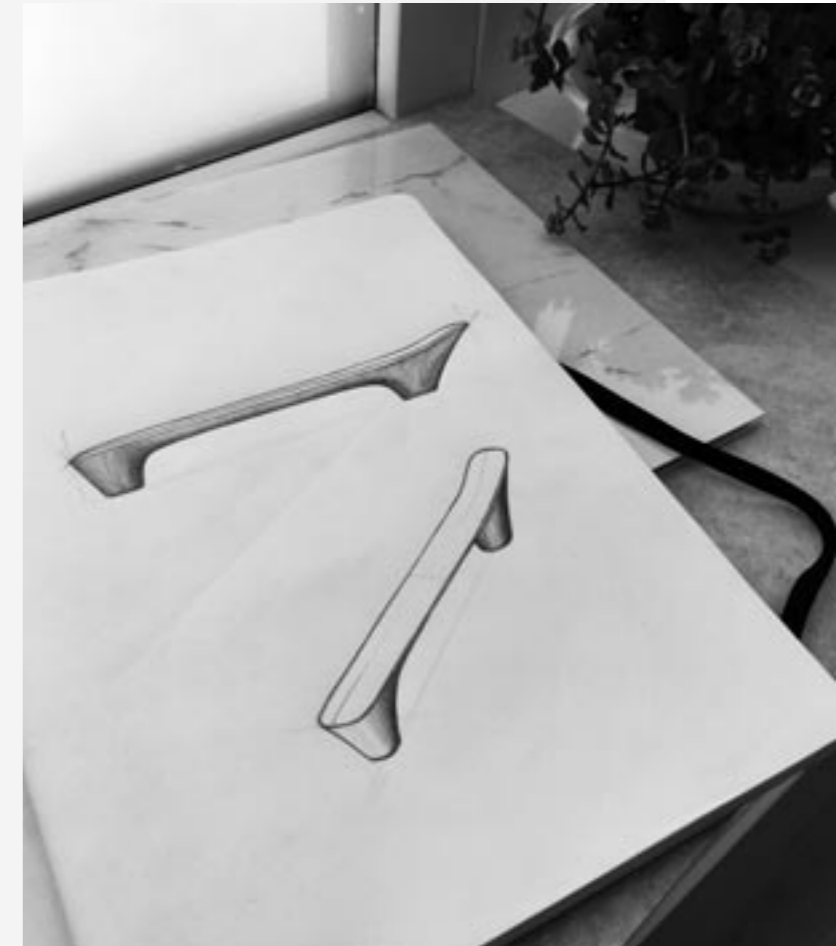
PATENTED CLICK FIT ASSEMBLY SYSTEM

With our installers in mind, Flair have designed ETO with a patented "Click Fit" Assembly System.

This revolutionary assembly mechanism is screw free and ensures each door can be installed easily and securely.

The tapered dovetail joint locks securely into position, giving a seamless connection between the vertical and horizontal profiles. This pioneering installation system ensures maximum structural integrity within every door and makes ETO the shower door of choice for the busiest of bathrooms.

(European Application No 19170695.1)



IDEA
CONCEPT
PROTOTYPE
ETO

INFOLD DOOR

SILVER MATTE BLACK

The ETO Infold is the perfect blend of elegance with practical functionality.

This outward opening door protrudes minimally into the bathroom, saving on space. The unique Infold door design also affords generous access to the shower.

The ETO Infold features a pioneering magnetic linkage system which gives the door a perfectly smooth gliding action. This innovative design removes the need for magnetic seals on the glass, giving a beautifully seamless glass edge to the door.

As is standard across the ETO range, the Infold door is constructed from 8mm toughened safety glass with ClearVue hydrophobic coating. All interior fixings are fully concealed, making this shower enclosure as delightful internally as externally.

DOOR SIZE OPTIONS

PRODUCT SIZE (mm)	ADJUSTMENT SIZE		ACCESS (mm)	CODE	CODE
	MIN (mm)	MAX (mm)		SILVER	MATTE BLACK
700	650	690	496	ETOIF70SC	ETOIF70BC
760	710	750	556	ETOIF76SC	ETOIF76BC
800	750	790	596	ETOIF80SC	ETOIF80BC
900	850	890	696	ETOIF90SC	ETOIF90BC
1000	950	990	796	ETOIF100SC	ETOIF100BC

SEMI FRAMED SIDE PANEL OPTIONS *(Includes Corner Profile)*

PRODUCT SIZE (mm)	ADJUSTMENT SIZE		CODE	CODE
	MIN (mm)	MAX (mm)	SILVER	MATTE BLACK
700	660	680	ETOSP70SC	ETOSP70BC
760	720	740	ETOSP76SC	ETOSP76BC
800	760	780	ETOSP80SC	ETOSP80BC
900	860	880	ETOSP90SC	ETOSP90BC
1000	960	980	ETOSPI00SC	ETOSPI00BC
1100	1060	1080	ETOSPI10SC	-
1200	1160	1180	ETOSPI20SC	ETOSPI20BC

NOTE – An ETO Infold installed with a side panel must be installed with the 10mm compensating profile supplied.

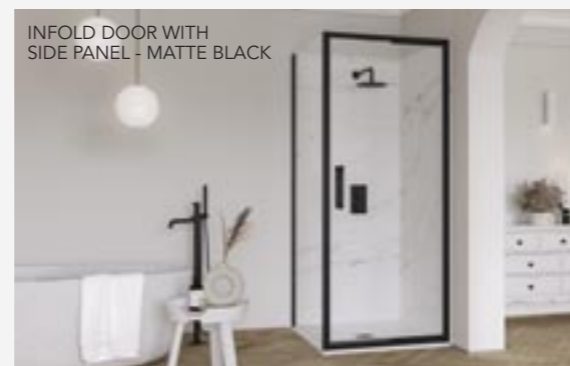
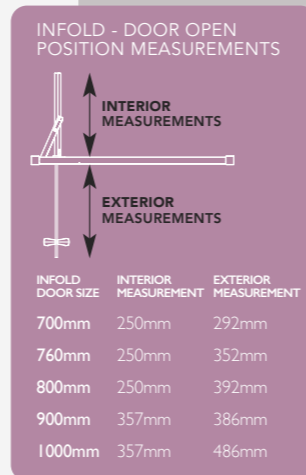
PRODUCT SIZE	CODE	CODE
	SILVER	MATTE BLACK
10mm Compensating Wall Profile*	ETOCB10SC	ETOCB10BC
25mm Compensating Wall Profile	ETOCB25SC	ETOCB25BC

Infold Door is also suitable to be installed with an Inline Panel - For size options, please see below.
*10mm Compensating Wall Profile included with side panel

INLINE PANEL OPTIONS

PRODUCT SIZE (mm)	CODE	CODE
	SILVER	MATTE BLACK
150	ETOIL15SC	ETOIL15BC
200	ETOIL20SC	ETOIL20BC
300	ETOIL30SC	ETOIL30BC
400	ETOIL40SC	ETOIL40BC
450	ETOIL45SC	ETOIL45BC
500	ETOIL50SC	ETOIL50BC

NOTE – An ETO Inline Panel can be installed on each or both sides on the door with a compensating wall profile supplied.



INFOLD DOOR WITH SIDE PANEL - MATTE BLACK



INFOLD DOOR IN ALCOVE - SILVER

2000mm HEIGHT	8mm TOUGHENED SAFETY GLASS	20mm PROFILE ADJUSTMENT	CRAFTED HANDLE DESIGN	CLEARVUE GLASS COATING	ULTRA CLEAR SEALS	SILVER & BLACK OPTIONS AVAILABLE *SELECTED DOOR STYLES
PRESS FIT SEAL DESIGN	ULTRA SLIM CHROME PLATED COVER CAPS	SEAMLESS INTERIOR COVER STRIPS	SHOWER TRAY OR WETROOM APPLICATION	REVERSIBLE	PRE-ASSEMBLED PROFILE FRAME	LIFETIME GUARANTEE

ETO BRUSHED COLLECTION

INFOLD DOOR

BRUSHED BRASS BRUSHED NICKEL BRUSHED BRONZE

The ETO Infold is the perfect blend of elegance with practical functionality.

This outward opening door protrudes minimally into the bathroom, saving on space. The unique Infold door design also affords generous access to the shower.

The ETO Infold features a pioneering magnetic linkage system which gives the door a perfectly smooth gliding action. This innovative design removes the need for magnetic seals on the glass, giving a beautifully seamless glass edge to the door.

As is standard across the ETO range, the Infold door is constructed from 8mm toughened safety glass with ClearVue hydrophobic coating. All interior fixings are fully concealed, making this shower enclosure as delightful internally as externally.

DOOR SIZE OPTIONS

PRODUCT SIZE (mm)	ADJUSTMENT SIZE		ACCESS (mm)	CODE BRUSHED BRASS	CODE BRUSHED NICKEL	CODE BRUSHED BRONZE
	MIN (mm)	MAX (mm)				
800	750	790	596	ETOIF80BRBC	ETOIF80BRNC	ETOIF80BRZC
900	850	890	696	ETOIF90BRBC	ETOIF90BRNC	ETOIF90BRZC
1000	950	990	796	ETOIF100BRBC	ETOIF100BRNC	ETOIF100BRZC

SEMI FRAMED SIDE PANEL OPTIONS *(Includes Corner Profile)*

PRODUCT SIZE (mm)	ADJUSTMENT SIZE		CODE BRUSHED BRASS	CODE BRUSHED NICKEL	CODE BRUSHED BRONZE
	MIN (mm)	MAX (mm)			
700	660	680	ETOSP70BRBC	ETOSP70BRNC	ETOSP70BRZC
800	760	780	ETOSP80BRBC	ETOSP80BRNC	ETOSP80BRZC
900	860	880	ETOSP90BRBC	ETOSP90BRNC	ETOSP90BRZC
1000	960	980	ETOSP100BRBC	-	-

NOTE – An ETO Infold installed with a side panel must be installed with the 10mm compensating profile supplied.

COMPENSATING PROFILE OPTIONS

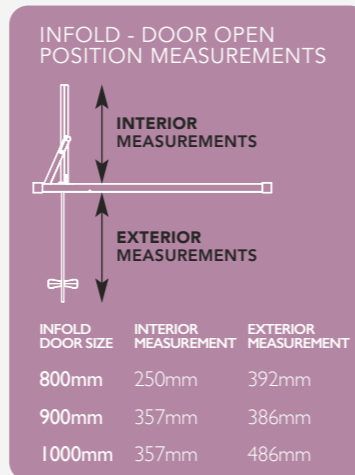
PRODUCT SIZE (mm)	CODE BRUSHED BRASS	CODE BRUSHED NICKEL	CODE BRUSHED BRONZE
10mm Compensating Wall Profile*	ETOCB10BRB	-	-
25mm Compensating Wall Profile	ETOCB25BRB	ETOCB25BRN	ETOCB25BRZ

Infold Door is also suitable to be installed with an Inline Panel - For size options, please see below.
*10mm Compensating Wall Profile included with side panel.

INLINE PANEL OPTIONS

PRODUCT SIZE (mm)	CODE BRUSHED BRASS	CODE BRUSHED NICKEL	CODE BRUSHED BRONZE
300	ETOIL30BRBC	ETOIL30BRNC	ETOIL30BRZC
400	ETOIL40BRBC	ETOIL40BRNC	ETOIL40BRZC

NOTE – An ETO Inline Panel can be installed on each or both sides on the Infold Door with compensating profile supplied.



HINGE DOOR

SILVER MATTE BLACK

The stylish yet functional simplicity of the ETO Hinge door makes it the ideal choice for today's contemporary bathroom.

This 2 metre high door is supported by two precisely curved hinges that boast a flush to glass interior finish which allow for ease of cleaning. 8mm toughened safety glass is coated with ClearVue hydrophobic coating to resist the build up of unwanted grime and limescale.

The ETO Hinge door can be fitted independently in an alcove setting or with a dedicated ETO side panel of choice.

DOOR SIZE OPTIONS

PRODUCT SIZE (mm)	ADJUSTMENT SIZE		ACCESS (mm)	CODE SILVER	CODE MATTE BLACK
	MIN (mm)	MAX (mm)		ETOHD80SC	ETOHD80BC
800	750	790	646	ETOHD80SC	ETOHD80BC
900	850	890	746	ETOHD90SC	ETOHD90BC
1000	950	990	846	ETOHD100SC	-

SEMI FRAMED SIDE PANEL OPTIONS (Includes Corner Profile)

PRODUCT SIZE (mm)	ADJUSTMENT SIZE		CODE SILVER	CODE MATTE BLACK
	MIN (mm)	MAX (mm)	ETOSP70SC	ETOSP70BC
700	660	680	ETOSP70SC	ETOSP70BC
760	720	740	ETOSP76SC	ETOSP76BC
800	760	780	ETOSP80SC	ETOSP80BC
900	860	880	ETOSP90SC	ETOSP90BC
1000	960	980	ETOSP100SC	ETOSP100BC
1100	1060	1080	ETOSP110SC	-
1200	1160	1180	ETOSP120SC	ETOSP120BC

NOTE – An ETO Hinge Door installed with a side panel must be installed with the 10mm compensating profile supplied.

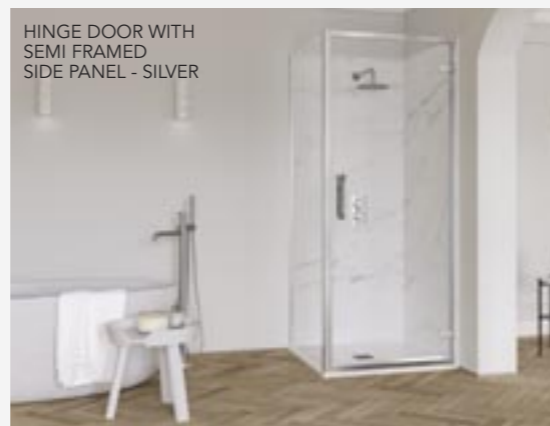
PRODUCT SIZE	CODE SILVER	CODE MATTE BLACK
10mm Compensating Wall Profile*	ETOCB10SC	ETOCB10BC
25mm Compensating Wall Profile	ETOCB25SC	ETOCB25BC

Hinge Door is also suitable to be installed with an Inline Panel - For size options, please see below.
*10mm Compensating Wall Profile included with side panel

INLINE PANEL OPTIONS

PRODUCT SIZE (mm)	CODE SILVER	CODE MATTE BLACK
150	ETOIL15SC	ETOIL15BC
200	ETOIL20SC	ETOIL20BC
300	ETOIL30SC	ETOIL30BC
400	ETOIL40SC	ETOIL40BC
450	ETOIL45SC	ETOIL45BC
500	ETOIL50SC	ETOIL50BC

NOTE – An ETO Inline Panel can be installed on each or both sides on the door with a compensating wall profile supplied.



HINGE DOOR WITH SEMI FRAMED SIDE PANEL - SILVER

HINGE DOOR WITH INLINE PANEL - MATTE BLACK

 2000mm HEIGHT	 8mm TOUGHENED SAFETY GLASS	 20mm PROFILE ADJUSTMENT	 CRAFTED HANDLE DESIGN	 CLEARVUE GLASS COATING	 ULTRA CLEAR SEALS	 PRE-ASSEMBLED PROFILE FRAME	 SILVER & BLACK OPTIONS AVAILABLE *SELECTED DOOR STYLES
 PRESS FIT SEAL DESIGN	 ULTRA SLIM CHROME PLATED COVER CAPS	 SEAMLESS INTERIOR COVER STRIPS	 SHOWER TRAY OR WETROOM APPLICATION	 REVERSIBLE	 COUNTERSUNK INTERIOR HINGES	 LIFETIME GUARANTEE	



HINGE DOOR WITH SEMI FRAMED SIDE PANEL - BRUSHED BRASS

- 2000mm HEIGHT
- 8mm TOUGHENED SAFETY GLASS
- 20mm PROFILE ADJUSTMENT
- CRAFTED HANDLE DESIGN
- CLEARVUE GLASS COATING
- ULTRA CLEAR SEALS
- MAGNETIC CUSHION CLOSE DOOR SYSTEM
- PRESS FIT SEAL DESIGN
- ULTRA SLIM CHROME PLATED COVER CAPS
- SEAMLESS INTERIOR COVER STRIPS
- SHOWER TRAY OR WETROOM APPLICATION
- REVERSIBLE
- LIFETIME GUARANTEE

ETO BRUSHED COLLECTION

HINGE DOOR

BRUSHED BRASS BRUSHED NICKEL BRUSHED BRONZE

The stylish yet functional simplicity of the ETO Hinge door makes it the ideal choice for today's contemporary bathroom.

This 2 metre high door is supported by two precisely curved hinges that boast a flush to glass interior finish which allow for ease of cleaning. 8mm toughened safety glass is coated with ClearVue hydrophobic coating to resist the build up of unwanted grime and limescale.

The ETO Hinge door can be fitted independently in an alcove setting or with a dedicated ETO side panel of choice.

DOOR SIZE OPTIONS

PRODUCT SIZE (mm)	ADJUSTMENT SIZE			ACCESS (mm)	CODE BRUSHED BRASS	CODE BRUSHED NICKEL	CODE BRUSHED BRONZE
	MIN (mm)	MAX (mm)					
800	750	790	596		ETOHD80BRBC	ETOHD80BRNC	ETOHD80BRZC
900	850	890	646		ETOHD90BRBC	ETOHD90BRNC	ETOHD90BRZC
1000	950	990	846		ETOHD100BRBC	ETOHD100BRNC	ETOHD100BRZC

SEMI FRAMED SIDE PANEL OPTIONS *(Includes Corner Profile)*

PRODUCT SIZE (mm)	ADJUSTMENT SIZE			CODE BRUSHED BRASS	CODE BRUSHED NICKEL	CODE BRUSHED BRONZE
	MIN (mm)	MAX (mm)				
700	660	680		ETOSP70BRBC	ETOSP70BRNC	ETOSP70BRZC
800	760	780		ETOSP80BRBC	ETOSP80BRNC	ETOSP80BRZC
900	860	880		ETOSP90BRBC	ETOSP90BRNC	ETOSP90BRZC
1000	960	980		ETOSP100BRBC	-	-

NOTE – An ETO Hinge Door installed with a side panel must be installed with the 10mm compensating profile supplied.

COMPENSATING PROFILE OPTIONS

PRODUCT SIZE (mm)	ADJUSTMENT SIZE			CODE BRUSHED BRASS	CODE BRUSHED NICKEL	CODE BRUSHED BRONZE
	MIN (mm)	MAX (mm)				
10mm Compensating Wall Profile*				ETOCB10BRB	-	-
25mm Compensating Wall Profile				ETOCB25BRB	ETOCB25BRN	ETOCB25BRZ

Hinge Door is also suitable to be installed with an Inline Panel - For size options, please see below.

*10mm Compensating Wall Profile included with side panel.

INLINE PANEL OPTIONS

PRODUCT SIZE (mm)	CODE BRUSHED BRASS	CODE BRUSHED NICKEL	CODE BRUSHED BRONZE
	300	ETOIL30BRBC	ETOIL30BRNC
400	ETOIL40BRBC	ETOIL40BRNC	ETOIL40BRZC

Note – An ETO Inline Panel can be installed on each or both sides on the Hinge Door with compensating profile supplied.





HINGE & INLINE DOOR WITH SEMI FRAMED SIDE PANEL - SILVER



HINGE AND INLINE DOOR WITH INLINE PANEL - MATTE BLACK

HINGE & INLINE DOOR

SILVER MATTE BLACK

The impressive ETO Hinge and Inline door is the perfect option for those larger luxurious bathroom spaces.

The flawless semi framed profiles give this door a robust feel, whilst the crafted ETO handle provides optimal functionality with its integrated towel hook design.

Designed with purpose, the softly curved hinges are countersunk into the glass and their flush interior finish allows for ease of cleaning. As is standard across the ETO range, this door comes with ClearVue glass coating which repels grime and limescale build up.

DOOR SIZE OPTIONS

PRODUCT SIZE (mm)	ADJUSTMENT SIZE		ACCESS (mm)	CODE SILVER	CODE MATTE BLACK
	MIN (mm)	MAX (mm)			
1100	1050	1090	725	ETOHD110SC	-
1200	1150	1190	725	ETOHD120SC	ETOHD120BC
1300	1250	1290	725	ETOHD130SC	-
1400	1350	1390	725	ETOHD140SC	ETOHD140BC
1500	1450	1490	725	ETOHD150SC	-
1600	1550	1590	725	ETOHD160SC	-

SEMI FRAMED SIDE PANEL OPTIONS *(Includes Corner Profile)*

PRODUCT SIZE (mm)	ADJUSTMENT SIZE		CODE SILVER	CODE MATTE BLACK
	MIN (mm)	MAX (mm)		
700	660	680	ETOSP70SC	ETOSP70BC
760	720	740	ETOSP76SC	ETOSP76BC
800	760	780	ETOSP80SC	ETOSP80BC
900	860	880	ETOSP90SC	ETOSP90BC
1000	960	980	ETOSP100SC	ETOSP100BC
1100	1060	1080	ETOSP110SC	-
1200	1160	1180	ETOSP120SC	ETOSP120BC

NOTE – An ETO Hinge & Inline Door installed with a side panel must be installed with the 10mm compensating profile supplied.

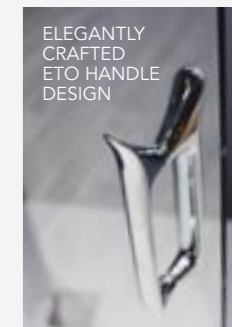
PRODUCT SIZE	CODE SILVER	CODE MATTE BLACK
10mm Compensating Wall Profile*	ETOCB10SC	ETOCB10BC
25mm Compensating Wall Profile	ETOCB25SC	ETOCB25BC

Hinge & Inline Door is also suitable to be installed with an Inline Panel - For size options, please see below.
*10mm Compensating Wall Profile included with side panel

INLINE PANEL OPTIONS

PRODUCT SIZE (mm)	CODE SILVER	CODE MATTE BLACK
150	ETOIL15SC	ETOIL15BC
200	ETOIL20SC	ETOIL20BC
300	ETOIL30SC	ETOIL30BC
400	ETOIL40SC	ETOIL40BC
450	ETOIL45SC	ETOIL45BC
500	ETOIL50SC	ETOIL50BC

NOTE – An ETO Inline Panel can be installed on each or both sides on the door with a compensating wall profile supplied.

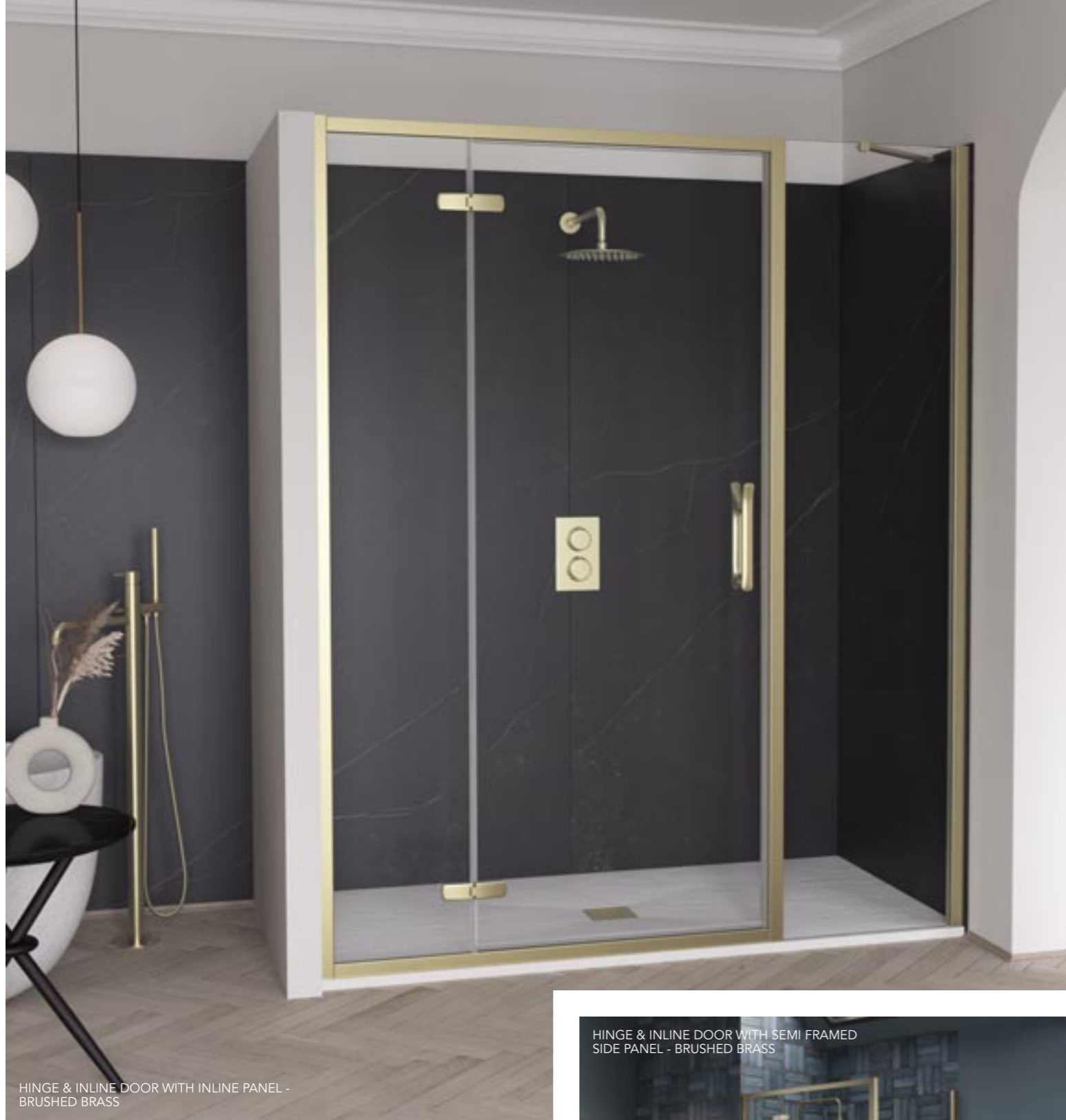


ELEGANTLY CRAFTED ETO HANDLE DESIGN

SOFTLY CURVED ETO HINGE DESIGN WITH COUNTERSUNK INTERIOR FINISH



 2000mm HEIGHT	 8mm TOUGHENED SAFETY GLASS	 20mm PROFILE ADJUSTMENT	 CRAFTED HANDLE DESIGN	 CLEARVUE GLASS COATING	 ULTRA CLEAR SEALS	 COUNTERSUNK INTERIOR HINGES
 PRESS FIT SEAL DESIGN	 ULTRA SLIM CHROME PLATED COVER CAPS	 SEAMLESS INTERIOR COVER STRIPS	 SHOWER TRAY OR WETROOM APPLICATION	 REVERSIBLE	 SILVER & BLACK OPTIONS AVAILABLE *SELECTED DOOR STYLES	 LIFETIME GUARANTEE



HINGE & INLINE DOOR WITH INLINE PANEL - BRUSHED BRASS

HINGE & INLINE DOOR WITH SEMI FRAMED SIDE PANEL - BRUSHED BRASS



ETO BRUSHED COLLECTION

HINGE & INLINE DOOR

BRUSHED BRASS

BRUSHED NICKEL

BRUSHED BRONZE



DOOR SIZE OPTIONS

PRODUCT SIZE (mm)	ADJUSTMENT SIZE		ACCESS (mm)	CODE BRUSHED BRASS	CODE BRUSHED NICKEL	CODE BRUSHED BRONZE
	MIN (mm)	MAX (mm)				
1200	1150	1190	725	ETOHD120BRBC	ETOHD120BRNC	ETOHD120BRZC
1400	1350	1390	725	ETOHD140BRBC	ETOHD140BRNC	ETOHD140BRZC

SEMI FRAMED SIDE PANEL OPTIONS *(Includes Corner Profile)*

PRODUCT SIZE (mm)	ADJUSTMENT SIZE		CODE BRUSHED BRASS	CODE BRUSHED NICKEL	CODE BRUSHED BRONZE
	MIN (mm)	MAX (mm)			
700	660	680	ETOSP70BRBC	ETOSP70BRNC	ETOSP70BRZC
800	760	780	ETOSP80BRBC	ETOSP80BRNC	ETOSP80BRZC
900	860	880	ETOSP90BRBC	ETOSP90BRNC	ETOSP90BRZC
1000	960	980	ETOSP100BRBC	-	-

NOTE – An ETO Hinge & Inline Door installed with a side panel must be installed with the 10mm compensating profile supplied.

COMPENSATING PROFILE OPTIONS

PRODUCT	CODE BRUSHED BRASS	CODE BRUSHED NICKEL	CODE BRUSHED BRONZE
10mm Compensating Wall Profile*	ETOCB10BRB	-	-
25mm Compensating Wall Profile	ETOCB25BRB	ETOCB25BRN	ETOCB25BRZ

Hinge & Inline Door is also suitable to be installed with an Inline Panel - For size options, please see below. *10mm Compensating Wall Profile included with side panel.

INLINE PANEL OPTIONS

PRODUCT SIZE (mm)	CODE BRUSHED BRASS	CODE BRUSHED NICKEL	CODE BRUSHED BRONZE
300	ETOIL30BRBC	ETOIL30BRNC	ETOIL30BRZC
400	ETOIL40BRBC	ETOIL40BRNC	ETOIL40BRZC

Note – An ETO Inline Panel can be installed on each or both sides on the Hinge Door with compensating profile supplied.

The impressive ETO Hinge and Inline door is the perfect option for those larger luxurious bathroom spaces.

The flawless semi framed profiles give this door a robust feel, whilst the crafted ETO handle provides optimal functionality with its integrated towel hook design.

Designed with purpose, the softly curved hinges are countersunk into the glass and their flush interior finish allows for ease of cleaning. As is standard across the ETO range, this door comes with ClearVue glass coating which repels grime and limescale build up.

SLIDING DOOR

SILVER

MATTE BLACK

DOOR SIZE OPTIONS

PRODUCT SIZE (mm)	ADJUSTMENT SIZE		ACCESS (mm)	CODE	CODE
	MIN (mm)	MAX (mm)		SILVER	MATTE BLACK
1000	950	990	370	ETOSA100SC	-
1100	1050	1090	420	ETOSA110SC	ETOSA110BC
1200	1150	1190	470	ETOSA120SC	ETOSA120BC
1300	1250	1290	520	ETOSA130SC	-
1400	1350	1390	520	ETOSA140SC	ETOSA140BC
1500	1450	1490	570	ETOSA150SC	ETOSA150BC
1600	1550	1590	570	ETOSA160SC	-
1700	1650	1690	570	ETOSA170SC	-
1800	1750	1790	570	ETOSA180SC	-

SEMI FRAMED SIDE PANEL OPTIONS (Includes Corner Profile)

PRODUCT SIZE (mm)	ADJUSTMENT SIZE		CODE	CODE
	MIN (mm)	MAX (mm)	SILVER	MATTE BLACK
700	660	680	ETOSP70SC	ETOSP70BC
760	720	740	ETOSP76SC	ETOSP76BC
800	760	780	ETOSP80SC	ETOSP80BC
900	860	880	ETOSP90SC	ETOSP90BC
1000	960	980	ETOSPI00SC	ETOSPI00BC
1100	1060	1080	ETOSPI10SC	-
1200	1160	1180	ETOSPI20SC	ETOSPI20BC



SLIDING DOOR WITH SEMI FRAMED SIDE PANEL - MATTE BLACK

NOTE – An ETO Sliding door installed with a side panel must be installed with the 10mm compensating profile supplied.

NEW - FRAMELESS SIDE PANELS (Suitable only for Sliding Door)

PRODUCT SIZE (mm)	ADJUSTMENT SIZE		CODE	CODE
	MIN (mm)	MAX (mm)	SILVER	MATTE BLACK
700	660	680	ETOFSP70SC	ETOFSP70BC
760	720	740	ETOFSP76SC	ETOFSP76BC
800	760	780	ETOFSP80SC	ETOFSP80BC
900	860	880	ETOFSP90SC	ETOFSP90BC
1000	960	980	ETOFSP100SC	ETOFSP100BC
1200	1160	1180	ETOFSP120SC	ETOFSP120BC

PRODUCT SIZE	CODE	CODE
	SILVER	MATTE BLACK
10mm Compensating Wall Profile*	ETOCB10SC	ETOCB10BC
25mm Compensating Wall Profile	ETOCB25SC	ETOCB25BC

Sliding Door is also suitable to be installed with an Inline Panel - For size options, please see below.
*10mm Compensating Wall Profile included with side panel

INLINE PANEL OPTIONS

PRODUCT SIZE (mm)	CODE	CODE
	SILVER	MATTE BLACK
150	ETOIL15SC	ETOIL15BC
200	ETOIL20SC	ETOIL20BC
300	ETOIL30SC	ETOIL30BC
400	ETOIL40SC	ETOIL40BC
450	ETOIL45SC	ETOIL45BC
500	ETOIL50SC	ETOIL50BC



SLIDING DOOR IN ALCOVE - SILVER

With minimalist profiles surrounding 8mm toughened safety glass, the ETO Sliding Door is designed with long lasting durability in mind.

The sliding door glass is guided by stainless steel wheel brackets which provide an effortlessly smooth experience. The magnetic cushion close mechanism ensures a controlled and gentle action as the door opens and closes.

The curvature of the crafted ETO handle feels beautifully precise in hand, whilst also doubling up on functionality with its integrated towel hook design.



SLIDING DOOR WITH FRAMELESS SIDE PANEL - SILVER

 2000mm HEIGHT	 8mm TOUGHENED SAFETY GLASS	 20mm PROFILE ADJUSTMENT	 CRAFTED HANDLE DESIGN	 CLEARVUE GLASS COATING	 ULTRA CLEAR SEALS	 MAGNETIC CUSHION CLOSE DOOR SYSTEM	 SILVER & BLACK OPTIONS AVAILABLE *SELECTED DOOR STYLES
 PRESS FIT SEAL DESIGN	 ULTRA SLIM CHROME PLATED COVER CAPS	 SEAMLESS INTERIOR COVER STRIPS	 SHOWER TRAY OR WETROOM APPLICATION	 REVERSIBLE	 LIFETIME GUARANTEE	 CLICK FIT ASSEMBLY SYSTEM PATENTED	

NOTE – An ETO Inline Panel can be installed on each or both sides on the door with a compensating wall profile supplied.

ETO BRUSHED COLLECTION

SLIDING DOOR

BRUSHED BRASS BRUSHED NICKEL BRUSHED BRONZE

With minimalist profiles surrounding 8mm toughened safety glass, the ETO Sliding is designed with long lasting durability in mind.

The sliding door glass is guided by stainless steel wheel brackets which provide an effortlessly smooth experience. The magnetic cushion close mechanism ensures a controlled and gentle action as the door opens and closes.

The curvature of the crafted ETO handle feels beautifully precise in hand, whilst also doubling up on functionality with its integrated towel hook design.



DOOR SIZE OPTIONS

PRODUCT SIZE (mm)	ADJUSTMENT SIZE		ACCESS (mm)	CODE BRUSHED BRASS	CODE BRUSHED NICKEL	CODE BRUSHED BRONZE
	MIN (mm)	MAX (mm)				
1100	1050	1090	420	ETOSA110BRBC	ETOSA110BRNC	-
1200	1150	1190	470	ETOSA120BRBC	ETOSA120BRNC	ETOSA120BRZC
1400	1350	1390	520	ETOSA140BRBC	ETOSA140BRNC	ETOSA140BRZC
1500	1450	1490	570	ETOSA150BRBC	ETOSA150BRNC	ETOSA150BRZC

SEMI FRAMED SIDE PANEL OPTIONS *(Includes Corner Profile)*

PRODUCT SIZE (mm)	ADJUSTMENT SIZE		CODE BRUSHED BRASS	CODE BRUSHED NICKEL	CODE BRUSHED BRONZE
	MIN (mm)	MAX (mm)			
700	660	680	ETOSP70BRBC	ETOSP70BRNC	ETOSP70BRZC
800	760	780	ETOSP80BRBC	ETOSP80BRNC	ETOSP80BRZC
900	860	880	ETOSP90BRBC	ETOSP90BRNC	ETOSP90BRZC
1000	960	980	ETOSP100BRBC	-	-

NOTE – An ETO Sliding Door installed with a side panel must be installed with the 10mm compensating profile supplied.

COMPENSATING PROFILE OPTIONS

PRODUCT SIZE (mm)	ADJUSTMENT SIZE		CODE BRUSHED BRASS	CODE BRUSHED NICKEL	CODE BRUSHED BRONZE
	MIN (mm)	MAX (mm)			
10mm Compensating Wall Profile*			ETOCB10BRB	-	-
25mm Compensating Wall Profile			ETOCB25BRB	ETOCB25BRN	ETOCB25BRZ

Sliding Door is also suitable to be installed with an Inline Panel - For size options, please see below.
*10mm Compensating Wall Profile included with side panel.

INLINE PANEL OPTIONS

PRODUCT SIZE (mm)	CODE BRUSHED BRASS	CODE BRUSHED NICKEL	CODE BRUSHED BRONZE
300	ETOIL30BRBC	ETOIL30BRNC	ETOIL30BRZC
400	ETOIL40BRBC	ETOIL40BRNC	ETOIL40BRZC

NOTE – An ETO Inline Panel can be installed on each or both sides on the Infold Door with compensating profile supplied.



SLIDING DOOR WITH SIDE PANEL - BRUSHED NICKEL

SLIDING DOOR IN ALCOVE - BRUSHED NICKEL



SLIDING DOOR WITH SIDE PANEL - BRUSHED BRONZE



ONE DOOR QUADRANT

SILVER MATTE BLACK

The ETO One Door Quadrant is perfectly shaped to make the most out of a corner bathroom space.

Ideal for any bathroom, the innovative magnetic cushion close feature ensures a smooth rolling door action on this quadrant. The double wheel rollers have a stainless steel composition for longevity and their quick release design allow for ease of cleaning.

ClearVue hydrophobic coating on the 8mm toughened safety glass resists the build up of grime and limescale on the glass surface. The centrally positioned door opening provides easy access to the shower space and is considerate of furniture positioning within the bathroom.

DOOR SIZE OPTIONS

PRODUCT SIZE (mm)	ADJUSTMENT SIZE		ACCESS (mm)	CODE	CODE
	MIN (mm)	MAX (mm)		SILVER	MATTE BLACK
800	770	790	440	ETOOCQ80SC	-
900	870	890	484	ETOOCQ90SC	ETOOCQ90BC
1000	970	990	484	ETOOCQ100SC	ETOOCQ100BC



QUICK RELEASE ROLLER DESIGN



CRAFTED ETO HANDLE WITH INTEGRATED ROBE HOOK FEATURE



ONE DOOR QUADRANT - SILVER

- 2000mm HEIGHT
- 8mm TOUGHENED SAFETY GLASS
- 20mm PROFILE ADJUSTMENT
- CRAFTED HANDLE DESIGN
- CLEARVUE GLASS COATING
- ULTRA CLEAR SEALS
- MAGNETIC CUSHION CLOSE DOOR SYSTEM
- PRESS FIT SEAL DESIGN
- ULTRA SLIM CHROME PLATED COVER CAPS
- SEAMLESS INTERIOR COVER STRIPS
- SHOWER TRAY OR WETROOM APPLICATION
- REVERSIBLE
- SILVER & BLACK OPTIONS AVAILABLE *SELECTED DOOR STYLES
- LIFETIME GUARANTEE



ONE DOOR QUADRANT MATTE BLACK

ONE DOOR OFFSET QUADRANT

SILVER MATTE BLACK

The ETO One Door Offset Quadrant is perfectly shaped to make the most out of a corner bathroom space.

Ideal for larger bathrooms, the innovative magnetic cushion close feature ensures a smooth rolling door action on this offset quadrant. The double wheel rollers have a stainless steel composition for longevity and their quick release design allow for ease of cleaning.

ClearVue hydrophobic coating on the 8mm toughened safety glass resists the build up of grime and limescale on the glass surface. The centrally positioned door opening provides easy access to the shower space and is considerate of furniture positioning within the bathroom.

DOOR SIZE OPTIONS

PRODUCT SIZE (mm)	ADJUSTMENT SIZE MIN (mm)	MAX (mm)	ACCESS (mm)	CODE SILVER	CODE MATTE BLACK
1000 x 800 Long Side Opening	770-970	790-990	440	ETOOCQ100X80SCL	ETOOCQ100X80BCL
1200 x 800 Long Side Opening	770-1170	790-1190	440	ETOOCQ120X80SCL	ETOOCQ120X80BCL
1200 x 900 Long Side Opening	870-1170	890-1190	484	ETOOCQ120X90SCL	ETOOCQ120X90BCL



QUICK RELEASE ROLLER DESIGN



CRAFTED ETO HANDLE WITH INTEGRATED ROBE HOOK FEATURE



ONE DOOR OFFSET QUADRANT - MATTE BLACK



ONE DOOR OFFSET QUADRANT - SILVER

- 2000mm HEIGHT
- 8mm TOUGHENED SAFETY GLASS
- 20mm PROFILE ADJUSTMENT
- CRAFTED HANDLE DESIGN
- CLEARVUE GLASS COATING
- ULTRA CLEAR SEALS
- MAGNETIC CUSHION CLOSE DOOR SYSTEM
- PRESS FIT SEAL DESIGN
- ULTRA SLIM CHROME PLATED COVER CAPS
- SEAMLESS INTERIOR COVER STRIPS
- SHOWER TRAY OR WETROOM APPLICATION
- REVERSIBLE
- SILVER & BLACK OPTIONS AVAILABLE *SELECTED DOOR STYLES
- LIFETIME GUARANTEE

ETO BRUSHED COLLECTION

ONE DOOR QUADRANT & OFFSET QUADRANT

BRUSHED BRASS

BRUSHED NICKEL

BRUSHED BRONZE

The ETO One Door Quadrant and Offset Quadrant are perfectly shaped to make the most out of a corner bathroom space.

Ideal for larger bathrooms, the innovative magnetic cushion close feature ensures a smooth rolling door action on this offset quadrant. The double wheel rollers have a stainless steel composition for longevity and their quick release design allow for ease of cleaning.

ClearVue hydrophobic coating on the 8mm toughened safety glass resists the build up of grime and limescale on the glass surface. The centrally positioned door opening provides easy access to the shower space and is considerate of furniture positioning within the bathroom.

DOOR SIZE OPTIONS

PRODUCT SIZE (mm)	ADJUSTMENT SIZE		ACCESS (mm)	CODE	CODE	CODE
	MIN (mm)	MAX (mm)		BRUSHED BRASS	BRUSHED NICKEL	BRUSHED BRONZE
900	870	890	484	ETOOCQ90BRBC	ETOOCQ90BRNC	ETOOCQ90BRZC
1000x800*	770-970	790-990	440	ETOOCQ100X80BRBCL	-	-
	770-790	1170-1190	440	ETOOCQ120X80BRBCL	ETOOCQ120X80BRNCL	ETOOCQ120X80BRZCL
1200x900*	870-1170	890-1190	484	ETOOCQ120X90BRBCL	ETOOCQ120X90BRNCL	ETOOCQ120X90BRZCL

*Long Side Opening



CRAFTED ETO HANDLE WITH INTEGRATED ROBE HOOK FEATURE



- 2000mm HEIGHT
- 8mm TOUGHENED SAFETY GLASS
- 20mm PROFILE ADJUSTMENT
- CRAFTED HANDLE DESIGN
- CLEARVUE GLASS COATING
- ULTRA CLEAR SEALS
- MAGNETIC CUSHION CLOSE DOOR SYSTEM
- PRESS FIT SEAL DESIGN
- ULTRA SLIM CHROME PLATED COVER CAPS
- SEAMLESS INTERIOR COVER STRIPS
- SHOWER TRAY OR WETROOM APPLICATION
- REVERSIBLE
- LIFETIME GUARANTEE



ONE DOOR OFFSET QUADRANT - BRUSHED BRONZE



ONE DOOR QUADRANT - BRUSHED BRASS



TWO DOOR QUADRANT - SILVER

TWO DOOR QUADRANT

SILVER

Perfect for the every day, the gently curved detailing of this stylish Two Door Quadrant exudes contemporary elegance.

The magnetic cushion close door system brings both sliding doors to a controlled and gentle stop. The 8mm curved glass features ClearVue glass coating which repels against grime and limescale.

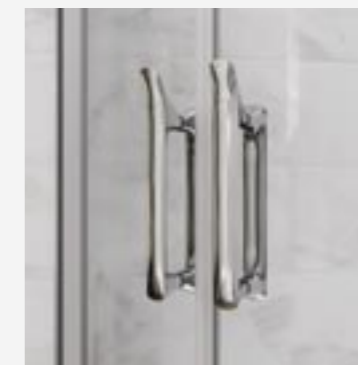
Superior quality double wheel rollers have a quick release design and are supported by stainless steel components, promising functional longevity in the busy bathroom environment.

DOOR SIZE OPTIONS

PRODUCT SIZE (mm)	ADJUSTMENT SIZE		ACCESS (mm)	CODE - SILVER
	MIN (mm)	MAX (mm)		
900	870	890	528	ETOCQ90SC



SUPERIOR DOUBLE WHEEL ROLLER SYSTEM



CRAFTED ETO HANDLE WITH INTEGRATED ROBE HOOK FEATURE



- 2000mm HEIGHT
- 8mm TOUGHENED SAFETY GLASS
- 20mm PROFILE ADJUSTMENT
- 11 CRAFTED HANDLE DESIGN
- CLEARVUE GLASS COATING
- ULTRA CLEAR SEALS
- PRESS FIT SEAL DESIGN
- ULTRA SLIM CHROME PLATED COVER CAPS
- SEAMLESS INTERIOR COVER STRIPS
- SHOWER TRAY OR WETROOM APPLICATION
- REVERSIBLE
- MAGNETIC CUSHION CLOSE DOOR SYSTEM
- LIFETIME GUARANTEE

TWO DOOR OFFSET QUADRANT

SILVER

With generous proportions, the ETO Two Door Offset Quadrant is a much favoured corner shower door choice for many discerning homeowners.

The magnetic cushion close door system brings this door to a controlled and gentle stop. The impressive 8mm curved glass features ClearVue hydrophobic coating which repels against grime and limescale.

The sleek yet sturdy metal profiles give this door a robust feel while its gently curved detailing captures the essence of contemporary elegance.

DOOR SIZE OPTIONS

PRODUCT SIZE (mm)	ADJUSTMENT SIZE MIN (mm)	MAX (mm)	(mm)	ACCESS SILVER
1100 x 800	770 - 1070	790 - 1090	458	ETOCQ80X110SC
1100 x 900	870 - 1070	890 - 1090	528	ETOCQ90X110SC
1200 x 800	770 - 1170	790 - 1190	458	ETOCQ80X120SC
1200 x 900	870 - 1170	890 - 1190	528	ETOCQ90X120SC



QUICK RELEASE
BOTTOM ROLLERS



MAGNETIC CUSHION
CLOSE DOOR SYSTEM

NOTE – Dedicated 1100 x 800mm and 1100 x 900mm offset quadrant slimline shower trays now available.



- 2000mm HEIGHT
- 8mm TOUGHENED SAFETY GLASS
- 20mm PROFILE ADJUSTMENT
- CRAFTED HANDLE DESIGN
- CLEARVUE GLASS COATING
- ULTRA CLEAR SEALS
- PRESS FIT SEAL DESIGN
- ULTRA SLIM CHROME PLATED COVER CAPS
- SEAMLESS INTERIOR COVER STRIPS
- SHOWER TRAY OR WETROOM APPLICATION
- REVERSIBLE
- MAGNETIC CUSHION CLOSE DOOR SYSTEM
- LIFETIME GUARANTEE



TWO DOOR OFFSET QUADRANT - SILVER



CORNER ENTRY

SILVER

The ETO Corner Entry boasts contemporary clean lines and a sturdy semi frameless design. The two door corner sliding configuration make the corner entry an ideal choice for the bathroom where space is limited.

The flush finish on the corner brackets provides for a truly seamless door aesthetic. Quick release double rollers ensure ease of cleaning while the magnetic cushion close system brings this door to a controlled and gentle stop.

Superior magnetic seals ensure watertightness and give a positive close action when both doors are drawn together.

DOOR SIZE OPTIONS

PRODUCT SIZE (mm)	ADJUSTMENT SIZE		ACCESS (mm)	CODE - SILVER
	MIN (mm)	MAX (mm)		
800	770	790	392	ETOCE80SC
900	870	890	462	ETOCE90SC



ETO CORNER ENTRY HANDLE DESIGN



SLEEK FLUSH CORNER BRACKET DESIGN



CLICK FIT
ASSEMBLY SYSTEM
PATENT PENDING

- 2000mm HEIGHT
- 8mm TOUGHENED SAFETY GLASS
- 20mm PROFILE ADJUSTMENT
- 11 CRAFTED HANDLE DESIGN
- CLEARVUE GLASS COATING
- ULTRA CLEAR SEALS
- PRESS FIT SEAL DESIGN
- ULTRA SLIM CHROME PLATED COVER CAPS
- SEAMLESS INTERIOR COVER STRIPS
- SHOWER TRAY OR WETROOM APPLICATION
- REVERSIBLE
- MAGNETIC CUSHION CLOSE DOOR SYSTEM

CORNER ENTRY - SILVER

QUALITY GUARANTEED

At Flair we have an unwavering commitment to product quality.

All Flair Shower doors and wetrooms are CE approved and manufactured in accordance with ISO 9001:2000 Quality Assurance systems. All glass is toughed safety glass and produced to EN12150.

Flair products are performance tested to EN14428. Shower doors and rotating wetroom panels have been subject to lifetime shower door cycle testing consisting of 20,000 functional cycles.

Flair Shower doors and rotating wetroom panels have also been tested for their durability, stability, and water retention properties to ensure that they meet the highest possible industry standards. Water is maintained where conventional showering practices are used and the product has been fitted in accordance with the Flair Fitting Instructions. Please note - Due to the weight of certain products, they may require a two man lift.

Images shown in this catalogue are for illustrative purposes only. All descriptions contained in this catalogue are for the purpose of explaining each product more clearly and do not form part of any contract with the company.

Guarantee

ORO & ETO Shower Doors are covered by a lifetime guarantee against manufacturer defect. A lifetime guarantee constitutes a term of 20 years. AYO Wetrooms and Bathscreens are covered by a 20 year guarantee against manufacturer defect. Shower Trays are subject to manufacturer guarantee. All guarantees are valid on the condition that goods are installed and maintained in accordance with the products fitting instructions and best practices. This guarantee is for domestic use only.

***Note: Non glass and detachable parts such as seals and cover caps are subject to normal wear and tear during usage and are under statutory guarantee for 2 years from time of purchase. Glass shattering is not subject to Lifetime guarantee.**

We ask our customers to register their guarantee online at www.flairshowers.com or return the guarantee card that comes with every Flair product.

After-sales & Spare Parts Service

Flair Showers are 100% committed to customer service excellence. For ultimate peace of mind, a comprehensive range of spare parts is available for all Flair product ranges. If you would like to talk to an aftercare specialist about your Flair product, please contact us on (Ireland & Northern Ireland) +353 42 966 8000 or (UK) 0800 1800 8050.

Return Policy

Flair will not accept return of any product that has been opened. We do not accept return of any product if the packaging has been damaged. If the product is unopened and not damaged, we will accept the return of the product but a handling fee of 25% of the invoice price will be charged.

Cleaning Guidelines

- Glass: Use a soft cloth and warm soapy water; rinse off thoroughly.
- Metallic Surfaces: Use a soft cloth and warm soapy water; rinse off thoroughly.
- Do not use "Spray & leave" cleaning products on the metal surface as these will cause damage to your product. These include acidic based cleaning products, bleaches, solvents or abrasive pads.
- In hard water areas, regular cleaning of your Flair door will help to prevent the build-up of limescale. Stubborn deposits of limescale can be removed with warm soapy water.
- Check your shower door for functionality periodically. Ensure that the wheel track is free from any grit / dirt which may have collected over time.

Installation

Full installation instructions are provided with each product to ensure correct installation. All Shower doors and wetroom panels are adjustable between the dimensions stated. All dimensions are approximate.

Shower Tray Installation

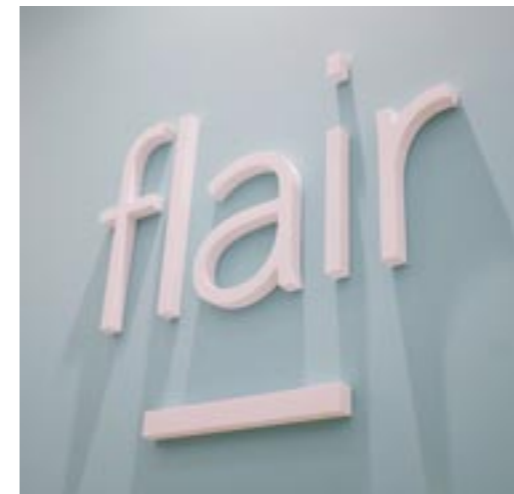
All shower trays must be installed as per instructions supplied. Install on a base of fine sand, cement and cement additive. Please note: Silicone sealants, foams, mastics, installation compound adhesive or similar must not be used as a substitute for cement. Ensure shower tray is 100% level and water test to ensure water is draining correctly. If not satisfied at any stage do not proceed with fitting. Fitting of Shower Tray is acceptance of quality.

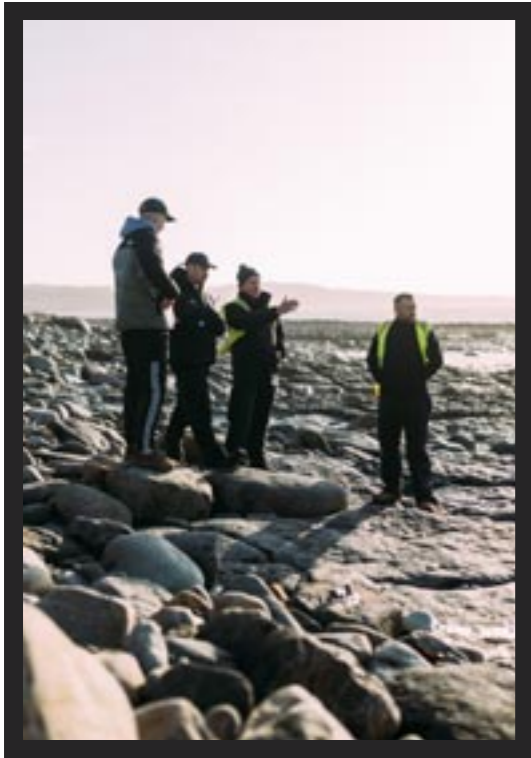
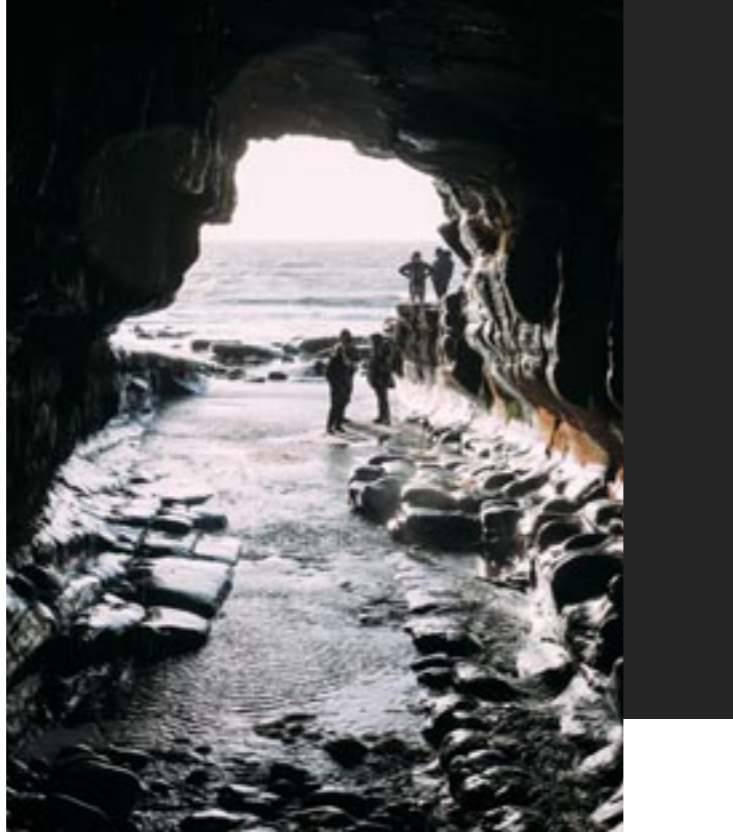
Conditions of Sale

Unless otherwise stated, all price quotations are subject to acceptance within 30 days of date of issue. Other than in the case of faulty goods / incorrect despatch, Flair will not accept the return of any product.

AS PART OF OUR CONTINUING POLICY OF PRODUCT IMPROVEMENT, WE RESERVE THE RIGHT TO AMEND SPECIFICATIONS, COLOURS AND PRICES WITHOUT PRIOR NOTICE.

*Errors and Omissions Exempt.



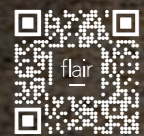


BEHIND
THE
SCENES

WATCH
THE
VIDEO



BROWSE OUR WATERFALL LOOKBOOK



FIND
YOUR
FLAIR



flair
—

Flair Showers

Ireland / Northern Ireland
+353 42 966 8000

England / Scotland / Wales
0800 180 8050

sales@flairshowers.com



FLAIRSHOWERS.COM

