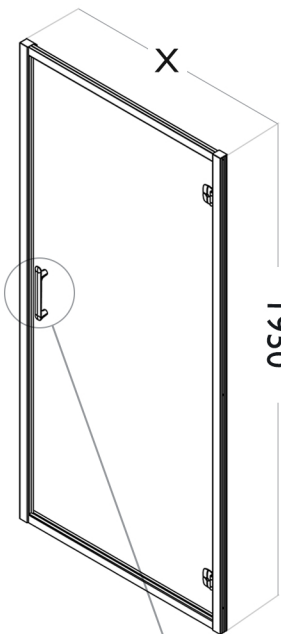


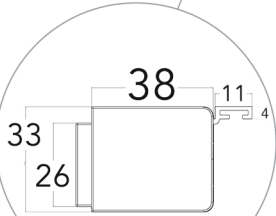
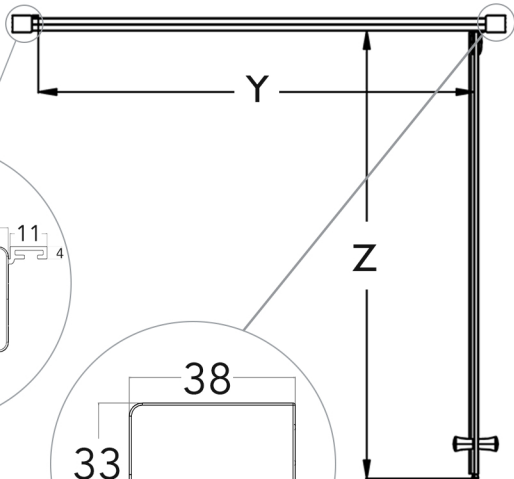
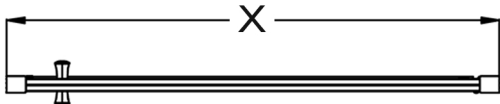


HINGE DOOR | SILVER

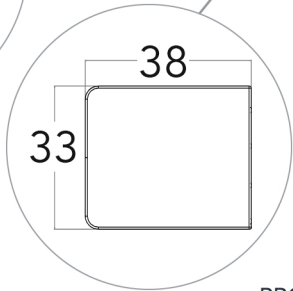
EN 14428:2015+A1:2018 (shower enclosures)	ClearVue Glass Coating	Seamless Interior Cover Strips
EN 12150-1:2013 (glass in building)	Reversible	25mm Wall Profile Extension Available
EN ISO7599 (anodizing of aluminium and its alloys)	Chrome Plated Handle	Shower Tray or Wetroom Installation
6mm Toughened Safety Glass	Ultra Clear PVC Seals	Pre-Assembled Door Frame on Bifold / Hinge Door
25mm Profile Adjustment	Press Fit Seal Design	20 Year Guarantee Against Manufacturing Defects*
1950mm Height	Chrome Plated ABS Cover Caps	



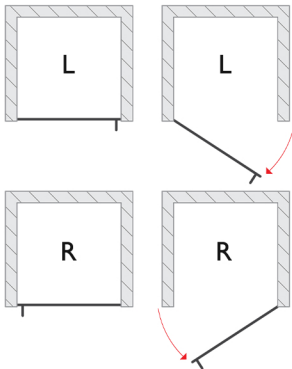
(MEASUREMENTS IN MM)



PROFILE
(handle side)



PROFILE
(hinge side)



HANDLE

SPECIFICATIONS

PRODUCT SIZE	ADJUSTMENT X (min - max)	DOOR ACCESS Y	EXTRUSION Z	PRODUCT WEIGHT	PRODUCT CODE
760mm	710 - 760mm	600mm	621mm	26.00kg	ILIHD76SC
800mm	750 - 800mm	640mm	661mm	28.00kg	ILIHD80SC
850mm	800 - 850mm	690mm	711mm	30.00kg	ILIHD85SC
900mm	850 - 900mm	740mm	761mm	31.00kg	ILIHD90SC
1000mm	950 - 1000mm	840mm	861mm	34.00kg	ILIHD100SC

+353 42 966 8000 | flairshowers.com | sales@flairshowers.com

All data presented may be subjected to change without prior notice. Flair Showers does the best it can to provide accurate information. Flair Showers unfortunately cannot guarantee this, and accept no liability for any information / advice given.

* Excludes perishable items such as rollers, seals, hinges, etc.

